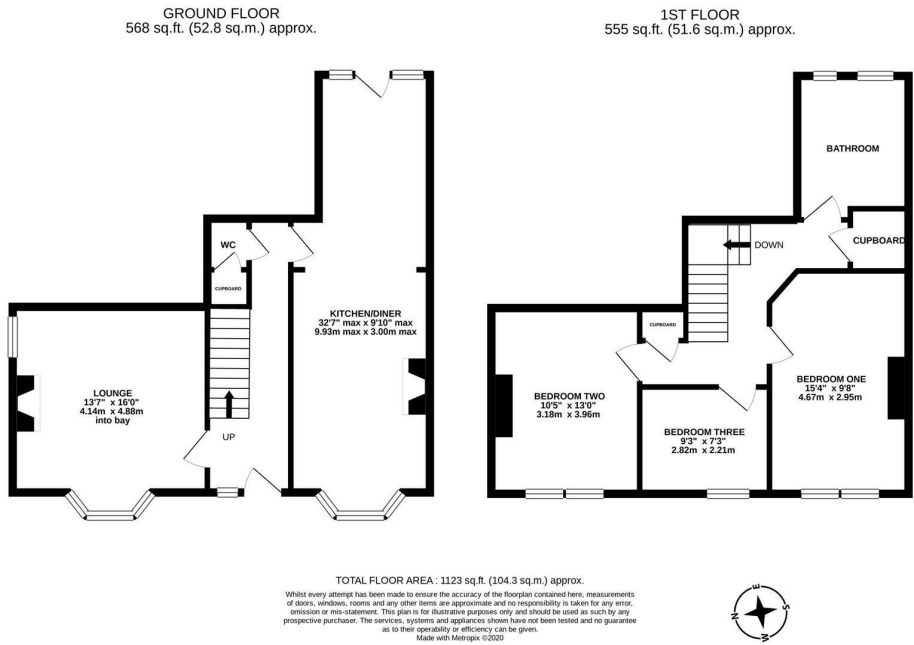




This delightful, double fronted, early Edwardian home is ideally located on Honister Avenue, High West Jesmond. Close to excellent local schools, Jesmond Dene and within striking distance of Ilford Road Metro Station, Honister Avenue is perfectly placed, approximately halfway between the shops of Gosforth High Street & the café culture of Jesmond.

The ground floor offers; entrance hall with staircase to first floor, downstairs WC and under stairs storage; lounge with walk-in bay; 32ft kitchen dining room with a door leading out to the rear, the kitchen area fully fitted with wall and base units and work surfaces together with Villeroy & Boch double butler sink and also with spot lighting. The first floor landing with storage gives access to three bedrooms, two of which are comfortable doubles and family bathroom with three-piece suite. Externally, an enclosed courtyard to the rear, with wall boundaries and gated access to the service lane. With gas 'combi' central heating and double glazing throughout, an internal inspection is a must.

Edwardian End Of Terrace | Double Fronted | 1,123 Sq ft (104.3m2) | Three Bedrooms | Great Location | 32ft Kitchen Diner | Bathroom | Close to Ilford Road Metro Station | Freehold | Council Tax Band D | EPC Rating: D



Offers Over £380,000

IMPORTANT NOTE: These particulars and the descriptions and measurements herein do not constitute representation and whilst every effort has been made to ensure accuracy, this cannot be guaranteed.

